



**PREVENTING
DOMESTIC ABUSE
AND REDUCING
THE HARM
IT CAUSES**

**Paulette Watson
Equate Project Coordinator**



equate

think. act. be.



equate
think. act. be.

Commissioned by Nottingham Crime & Drugs Partnership to be the lead providers delivering Domestic Abuse Awareness in Nottingham City Schools.

Our work is heavily subsidised

Equate £1000

Know More & Choices £500



2018/19

- Nottingham Girls Academy
- Nottingham Academy (Greenwood)
- Ellis Guilford School
- Bluecoat Beechdale
- Bluecoat Wollaton
- Bulwell Academy
- Djanogly

THE EQUATE PACKAGE

What do schools get

- Y7 drop down day - Healthy Unhealthy Relationships
- Y8 drop down day - Teen Abuse Awareness
- Y9 drop down day - Personal Space or Misogyny
- 2 x 90 minute Teacher Twilights
- Heads of Year Teacher Resources
- 4 x Domestic Abuse Posters
- Parents Information Evening
- Safeguarding guidance and support



TEACHER TWILIGHTS 90 MINUTES

- Domestic Abuse Awareness
- Domestic Abuse in Teenage Relationships
- Child Sexual Exploitation (CSE)
- Sexting
- Consent
- Forced Marriage & HBA
- FGM

Targeted Work

Know More Year 9 Girls

Choices Year 10 boys



Relationships Project

Healthy & Unhealthy Relationships



Someone who cares what I think

IMPORTANT

Someone who trusts me

Someone who gives me compliments

Someone my mates like

Someone who is honest with me

Someone not afraid to show me how they feel

Someone who has a fit body

Someone who listens to me

Someone who is a good friend

THINGS I DEFINITELY DO NOT WANT!

Someone who is aggressive towards me

Someone whose jealousy negatively impacts on me

Someone who wants to spend all of their time with me

Someone who agrees with what I say

Relationship Qualities Activity

In a large group we will discuss & decide which behaviours belong under which heading

Unhealthy



Sometimes unhealthy
(depends)



Healthy



Unhealthy

**Sometimes
unhealthy
(depends)**

Healthy



**Making a
partner feel
good**

Unhealthy



**Sometimes
unhealthy
(depends)**



Healthy



Being Jealous

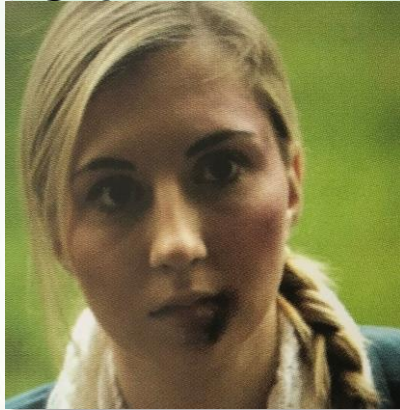
Teen Abuse Awareness



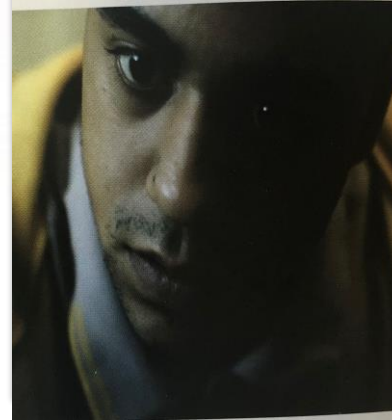
equate
think. act. be.

Respect Me Characters

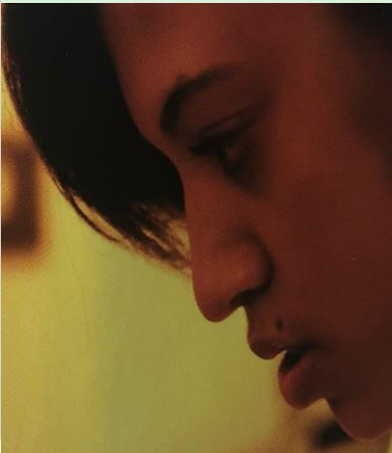
Sian



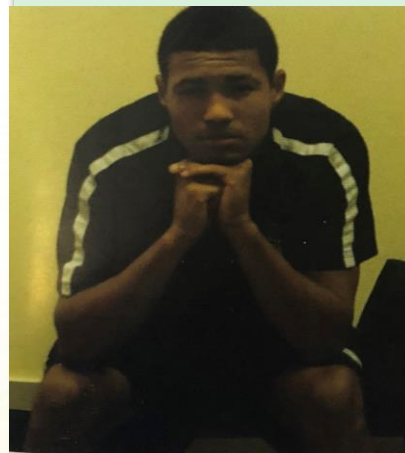
Miles



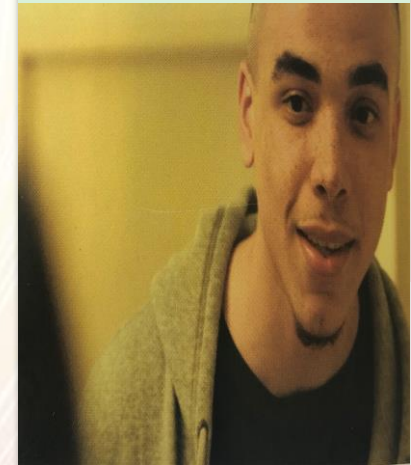
Sasha



Nathan



Leo



Year 9

Personal Space

Rights and responsibilities. Who do you allow into your intimate and personal space.

Misogyny

What is misogyny. We explore misogynistic language and behaviours. Raise awareness so that our young people are well informed.

The

GREAT

Project



Session One:

Healthy

Relationships

**Thank you for completing your
questionnaires**



What makes a relationship...

...Happy

Respect

Compromise

Love

Making decisions together

Listening to each other

Sharing

Trust

Having fun

Being kind



...Unhappy

Being disrespectful

Making fun of...

Leaving the other person out

Name calling

Bullying

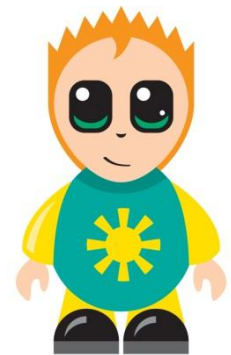
Racism

One person making all the decisions

Being violent



Session Two



Domestic abuse is hurtful behaviour that happens within romantic relationships.
Domestic abuse can happen when;



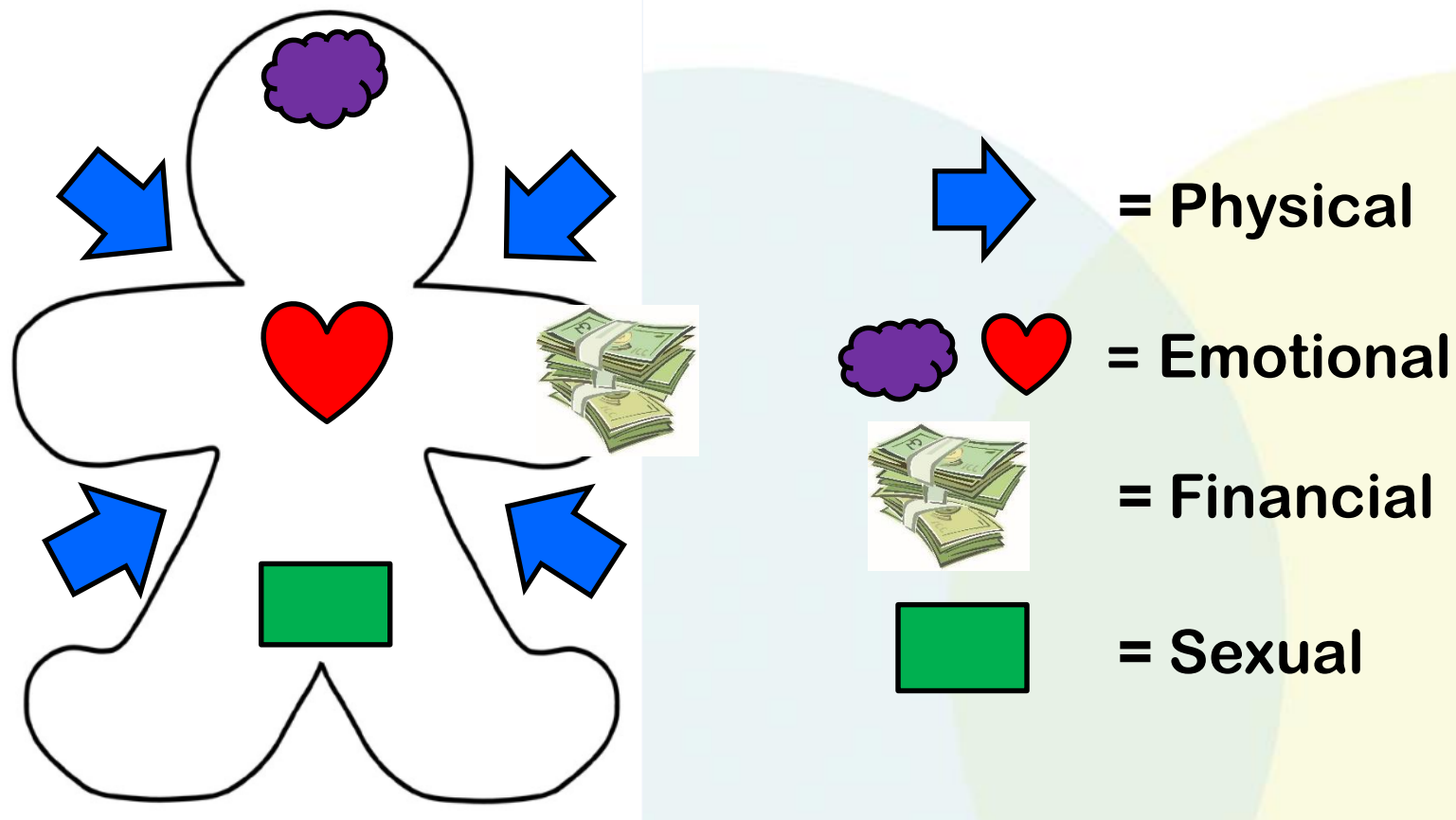
People are going out together



People are living together



Children can be hurt or bullied



Most domestic abuse is done by men to women, but it can also happen to men by women and in same sex relationships. It can also happen when a relationship has ended.



**Worried about where
they will live**

**Feel scared that they
might get into trouble**

**Think that domestic
abuse is part of their
religion or culture**

**Think its
their fault**

Feel guilty

Feel confused

**Worry that no one will
believe them**

Feel embarrassed

Session Three:

Excuses and Choices



Abusive Arguments

Shouting

Threatening

Not
Listening

Hitting,
pushing,
biting

Name
calling

Being
racist

Swearing



Fair Arguments

Listen to
each
other

No
threatening

No
name
calling

Respect

Taking
turns to
talk

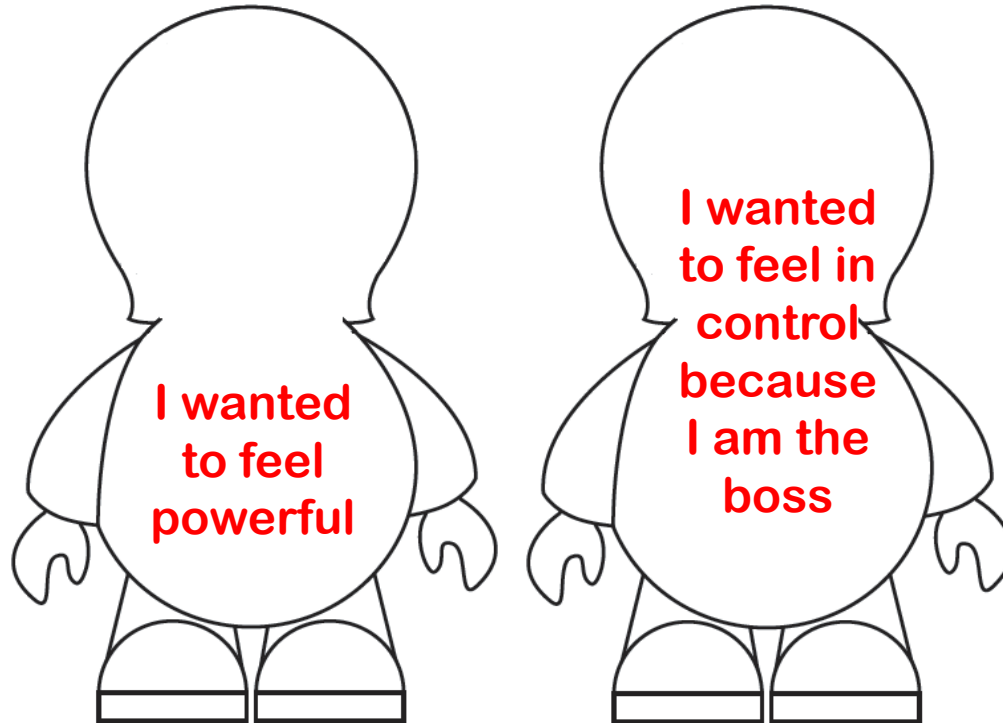
Compromise

Speaking
calmly

No
swearing



Reasons why someone does Domestic Abuse



Remember...

Good Relationships are Equal And Trusting

Session Four

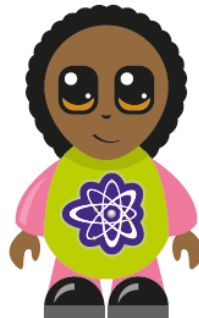
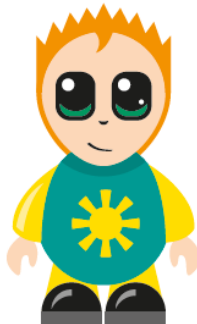
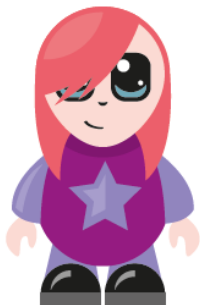
Respecting Each Other



Activity

Gender Roles

Imagine a family of a
man, woman and children
Answer each questions by
Putting a dot in the box



equation

equipping • enabling • empowering

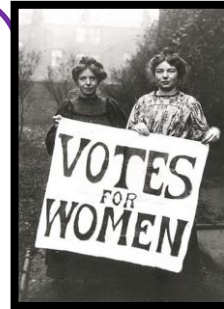
experts in equipping, enabling and empowering communities
to build equal relationships free from abuse

Gender Inequalities

In the early 1900's only boys were encouraged in to education



1928:
women were given an equal right to vote many years after men



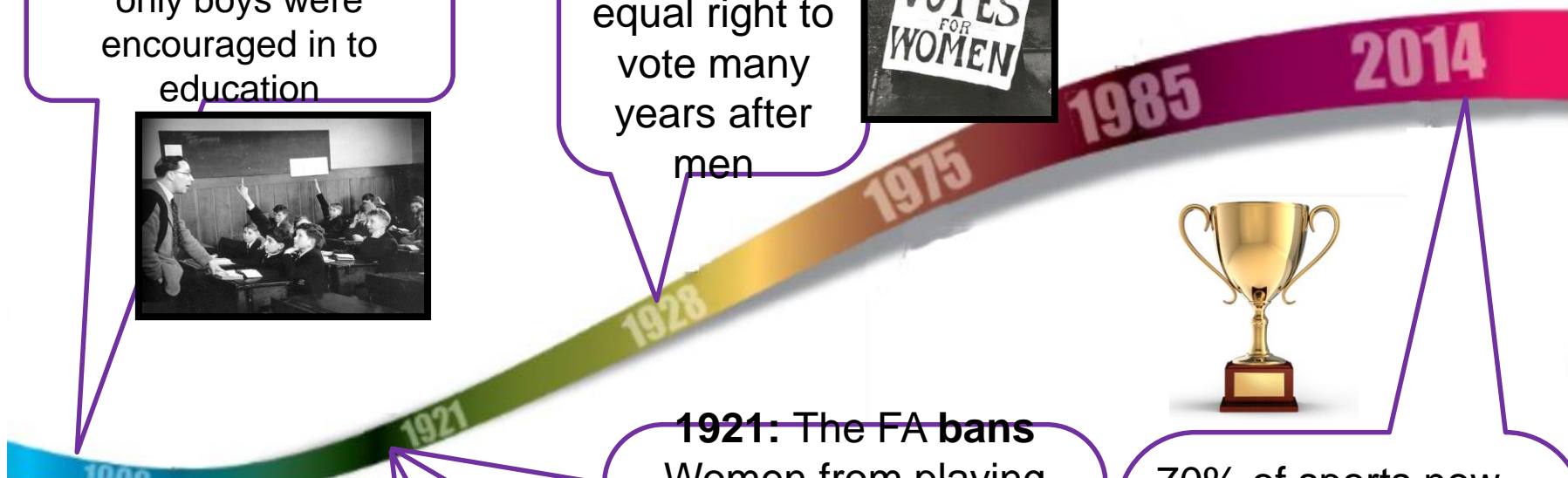
1921: The FA bans Women from playing on football league grounds “..the game of football is quite unsuitable for females and ought not to be encouraged.”



1920: 53,000 fans watch **Dick, Kerr Ladies** of Preston play St Helen's Ladies at Goodison Park



70% of sports now award equal prize money for men and women. Football, cricket, darts, snooker and golf are among 30% of sports where there are still inequalities.



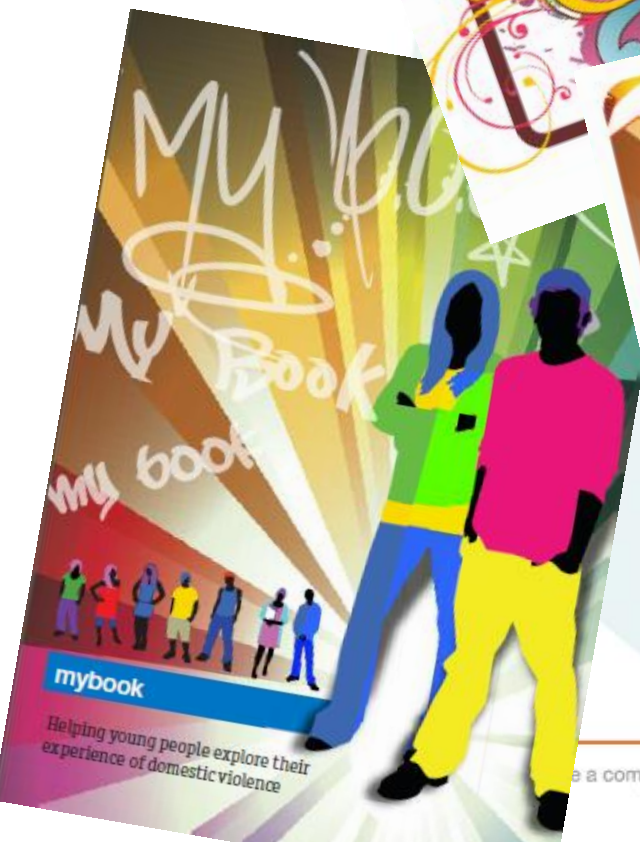
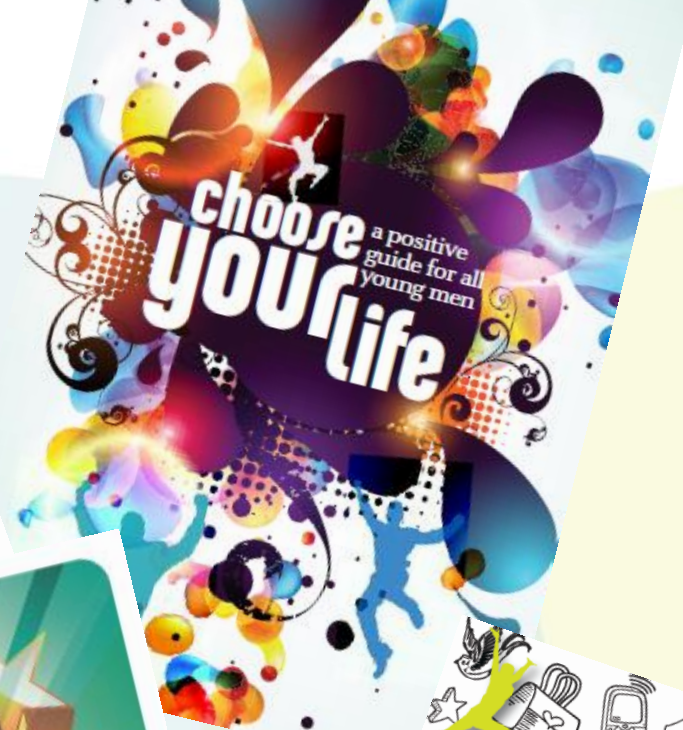


experts in... communities
to build equal relationships free from abuse

e
equipping • enabling • empowering

What do schools get?

- Twilight/training session covering how to use the resources, the key aims and the key messages.
- Electronic copy of
 - Session plans
 - Handouts
 - PowerPoints
 - Follow on activities
- Review session with Equation/ongoing support with content.



www.thegreatproject.org.uk

www.respectnotfear.co.uk

www.equation.org.uk

paulette@equation.org.uk

0115 9 623237



experts in equipping, enabling and empowering communities
to build equal relationships free from abuse