



NOTTINGHAM CITY  
**Safeguarding**  
**Children**  
PARTNERSHIP

# NOTTINGHAM CITY DSL NETWORK

19<sup>TH</sup> MAY 2020

# Welcome to your virtual DSL Network

During this very challenging time for the workforce, in many cases both professionally and personally, when we can not meet to share the challenges and support each other through our usual network. The Childrens Safeguarding Partnership in conjunction with the Education Directorate and partners have brought together some key safeguarding messages; in a modified format to serve as our virtual DSL network. We hope you find it informative and useful.

Thank you to our colleagues at Nottinghamshire police who have provided two excellent presentations in relation to Child Sexual Exploitation (CSE) and Female Genital Mutilation (FGM)

To support an interactive element to this process any questions can be sent to [safeguardingineducation@nottinghamcity.gov.uk](mailto:safeguardingineducation@nottinghamcity.gov.uk)

These will be collated and a response circuited.

# Useful sources of information

Partnership Statement: please attached



Adobe Acrobat  
Document

Nottingham City Council's : <https://www.nottinghamcity.gov.uk/coronavirus/>

# National Updates

## Domestic Violence Covid19 Campaign #youarenotalone,

You may have seen or heard in the media concern about the increase in reports of Domestic Violence during the current restrictions. The Home Office have launched the *you are not alone* campaign which includes a resource pack for professionals.

Please click here for further details



Adobe Acrobat  
Document

**The NSPCC** has adapted its offer of services available for children and families in Nottingham during COVID 19. Support for new referrals can be provided across the following areas:

**Wellbeing – children in care**

**Wellbeing – children and families**

**Online Safety**

**CSE : Protect & Respect and Awareness Raising**

Please click here for further details



Adobe Acrobat  
Document



Adobe Acrobat  
Document



Adobe Acrobat  
Document

# National Updates

## Rail Safety

Due to the very high level of trespassing on the tracks by young people in your local area, Network Rail in partnership with Learn Live are working to help raise awareness to students across the UK educating them about the dangers of the train tracks through interactive digital delivery.

Network rail ask you to share the relevant safety video with your teachers and parents of students during this difficult time, to help educate students before going back to school and help to protect them while being off school.

They have made things easier for you to watch the safety videos by just entering the email [railsafety@learnliveuk.com](mailto:railsafety@learnliveuk.com)

**Please click on the image below to view the relevant safety video:**

**Primary school version: Age 7- 11**

<https://learnliveuk.com/network-rail-primary-school-safety-talk/>

**Secondary school version: Age 11-16**

<https://learnliveuk.com/network-rail-secondary-school-safety-talk/>

**College version: Age 17 plus**

<https://learnliveuk.com/network-rail-college-safety-talk-lnw/>

continued...

Please note these are the recommended age ranges, we would always advise you to view the clips first to gauge suitability for your class.

The session is less than 15 minutes and explains why it is important to stay safe near the tracks. Over 1 million students, parents and teachers from across the UK have significantly decreased the number of trespasses in their area through watching the safety clip.

### **Primary school feedback - Brimsdown Primary School**

"The children all watched the video very closely and were interested in the facts regarding trains. This was compounded by seeing actual footage of children on the tracks. They just saw trains, as just that, trains. Now they know how difficult it is to stop, how much they weigh and the dangerous of walking along a track. They said they never really considered trains and rail lines to be that dangerous" They enjoyed the 'Rail rap'

### **Secondary school feedback - XP School**

"The students gave the video their full attention and they expressed their shock in certain parts. They were all transfixed and engaged. I think from the way the video began, which was quite light, the students really didn't expect something as hard hitting as it was. Not one of them spoke during the video. After it had finished, we had a long discussion and not one of them knew that both train and overhead lines were live"

**Thank you for supporting this message and for helping raise awareness to keep your young people safe.**

# National Updates

**Rapid Review** - 15 day timescales relaxed during the Covid19 crisis.

The National Panel along with Ofsted have issued updated guidance during the Covid19 crisis. Key points:

- They still expect Serious Incident Notifications to be submitted by the local authority within five days. (No change.)
- They still expect Rapid Reviews to be conducted but accept that the 15 day timescale for submission may not be met.

However, they note: *We would ask that the rapid review is expedited where there is a child death or serious injury in the context of abuse and neglect, and Covid-19 is a strongly related factor, and where local safeguarding partners think other partnerships could learn from this.*

Child Safeguarding Practice reviews Initiation, and pre-publication/publication timings relaxed

# Local updates: Covid arrangements

In this slide we have a request for the remaining EHCP risk assessments to be sent in, an overview of the attendance information for the city at this time, an update on the reporting timescales for the under 5's data return, and communication from the Community Nursing Team. I have also attached a free offer from the Educational Psychology Service for staff supervision.

## EHCP children – risk assessments

Thank you to everyone who has sent in their completed risk assessments for children with EHCPs, so far we have had just over half of them in. Please can you send your completed risk assessments for all children with an EHCP to [special.needs@nottinghamcity.gov.uk](mailto:special.needs@nottinghamcity.gov.uk) as soon as possible?



Microsoft Excel  
Worksheet

## Attendance information

Some of you have asked to see the citywide attendance information, and the pdf attached is a snapshot of the information sent in through the returns you make to the DfE. We receive this information a few days in arrears. If you have any questions, let me know.



Adobe Acrobat  
Document



## **Community Nurse Training Team**

As a result of the Covid- 19 pandemic Nottinghamshire Healthcare NHS Foundation Trust have cancelled a large number of face to face training and competency assessments, we are aware this is having a huge impact and we apologise for this.

Nottinghamshire Healthcare NHS Foundation Trust Children's Community Service is currently only providing business critical care, please be assured that the training element of the service is high on the agenda and we are looking at solutions to continue delivery both in the short and long term.

The Senior Nursing team are in the process of developing a recovery plan which supports all their stakeholders, patients and families to reduce the ongoing impact of Covid-19. As a result you may see different methods of training moving forward, including virtual sessions via Microsoft teams in the short term. Additionally they are also exploring long term the development of an online platform and webinar function for remote training.

NHCFT are investigating whether national guidance supports the extension of current competency timeframes as a result of Covid -19. Once they have confirmed this information they will be better placed to direct training priorities. However they are aware that they have cancelled over 700 training sessions and request that organisations priorities staff according to need.

Please can these list be sent to [Esther.Jenkinson@nottshc.nhs.uk](mailto:Esther.Jenkinson@nottshc.nhs.uk) and [Stephen.berry@nottshc.nhs.uk](mailto:Stephen.berry@nottshc.nhs.uk) as they look at a coordinated response.

## Changes to reporting timescales for under 5's

As you will know, the DfE have asked us to collect information about the number of under 5 year olds currently attending your schools. They have asked for this information twice a week – on a Monday and a Thursday.

In order to hit the deadlines, we asked you to send in the information on a Wednesday and a Friday but we have now automated the system so please can you send the information through to [covidarrangements@nottinghamcity.gov.uk](mailto:covidarrangements@nottinghamcity.gov.uk) by **midday on Monday and Thursday** and report on the children you have in school on that day?

We have asked the DfE to make this part of the reporting you already do, but until they make this change please send us the sheet twice a week, even if your numbers do not change. The DfE have produced their first report about the level of provision open to under 5 year olds – [here](#).

# Local updates: Covid19 arrangements

## CGJ Jigsaw / Drug and Alcohol Support

- Children under 18 (or family members affected) can access support through CGL Jigsaw. There is a leaflet attached with lots of information about the support that they can offer. The service continues to operate Mon-Fri, 9am – 5pm and they are still taking referrals. They are continuing to support existing service users during this time, with their 1 to 1 appointments taking place over the telephone or via digital formats.
- CGL Jigsaw are open 9am to 5pm Monday to Friday and contactable at [jigsaw@cgl.org.uk](mailto:jigsaw@cgl.org.uk) or call 0115 948 4314.
- You can also connect via Social Media links:  
Instagram: <https://www.instagram.com/cgljigsaw/> Facebook:  
<https://www.facebook.com/CGLJigsaw/> Twitter: <https://twitter.com/CGLJigsaw>

# Local updates: Covid19 arrangements

CGL have reviewed the referral form and the attached form will be in use until further notice.

- They are offering daily consultations (10-3pm) with professionals who may be working with either a young person (U-18) who is using substances/or is currently finding the lockdown difficult due to withdrawals of some sort, and people impacted by somebody else's use, young people or adults.
- They also have training available for professionals which we can deliver via Microsoft teams, these include hidden harm, substance specific, county lines to name a few.
- The referral form can be found by clicking on the icon





# Knife Crime and Serious Youth Violence

Early Police Alert to Schools

Lead – DCI Liz Rogers



NOTTINGHAMSHIRE  
**POLICE**  
PROUD TO SERVE



# What is it?

- A similar process to Operation Encompass
- The Designated Safeguarding Lead will receive daily alerts from police based within the Youth Justice Service if a young person attending their school has been named as connected to a knife related or serious violence incident in the previous 24 hours
- Initial roll out will be confined to those young people named as either the victim or offender until we understand the demand

# Why?

- We understand schools and alternative provision are often the first professionals to have contact with a young person after their involvement in an incident.
- We know that there are sometimes repercussions and reprisals that spill over into schools that need to be managed
- We want schools/AP to share information and intelligence about incidents with the police
- Whether victim or offender the young people will be in need support and safeguarding
- We know educational settings are key to a Contextual Safeguarding approach to the issue

# How?

- Police Officers/Staff based within the Youth Justice Team will review all relevant police incidents at the start of the working day.
- They will identify the school attended and DSL via direct access to database.
- The EPAS form will be completed and emailed directly to the DSL, SEIO and officer in the case that day.
- The DSL or deputy will be required to monitor their inbox and then contact the officer in the case and SEIO for further detail.
- Action thereafter will have to be determined on a case by case basis



# The EPAS Form



**Nottinghamshire  
POLICE**  
PROUD TO SERVE

## *Early Police Alert to Schools*

*The following is an early alert that a young person has been identified as being a pupil at your school who has been connected to a knife related or serious violence incident which has been reported to the Police.*

**Name:**  
**DOB:**  
**School:**

**Offence:** **Occurrence Number:**  
**Offence date:** [Click here to enter a date.](#) **Time:**

*As this is only an early alert of an incident, for more detailed and accurate information you must contact the Investigating Officer and not the sender of this email. Your Schools and Early Intervention Officer-SEIO will also be able to offer support and guidance:*

**Investigating Officer:**  
**Contact number:**  
**Email:** @nottinghamshire.pnn.police.uk

**Currently open to Youth Justice Service:** Choose an item.  
**YJS worker:** **Contact number:**

*The purpose of this early notification is for you to monitor the safeguarding and welfare of the young person, offer support, understand the context around any repercussions and to share information back with the police. Please speak with the Investigating officer or SEIO before making any approach to the young person or parent.*

*If the DSL speaks to the young person involved, subject to the alert, they **MUST** record what was said as it may need to be disclosed as third party material.*

**OFFICIAL - SENSITIVE**

# Developing the Process

- It will take time to embed and develop a process that works for all.
- We considered and discounted telephone contact (as Op. Encompass), as Youth Justice team will not have the full information at the time of the alert and the officer in the case will need to be part of the discussion about how to manage the case and contact with the young person, particularly if the offender is outstanding and evidence could be lost or destroyed.
- We will not specify whether the young person is named as a victim or offender as part of the alert, this will form part of the subsequent discussions.

# When?

- Daily Monday to Friday
- On a Monday morning all weekend incidents will be sent
- Nottingham County Youth Justice will commence sending alerts at start of autumn term 2019/20

# Feedback and Review

- It will be work in progress
- Please send any urgent feedback before go live to both PS Rebecca Hill and DCI Liz Rogers (rebecca.hill@nottinghamshire.pnn.police.uk elizabeth.rogers@nottinghamshire.pnn.police.uk)
- We know school roll records and DSL contacts may not always be up to date, so we will make best endeavours in each case.
- We will be keen to take feedback and review the process including value added, and will do this formally at the end of Autumn term.



# Public Protection

Sexual Exploitation Investigation Unit



NOTTINGHAMSHIRE  
**POLICE**  
PROUD TO SERVE

# Sexual Exploitation Investigation Unit

Based at Oxclose Lane Police station but  
provides a response to the whole county

Det. Supt Andy GOWAN  
Head of Public Protection



NOTTINGHAMSHIRE  
**POLICE**  
PROUD TO SERVE

# Sexual Exploitation Investigation Unit

Det. Chief Inspector Peter QUINN  
Lead for Children

Detective Insp. Jamie HILL  
Sexual Exploitation Investigation Unit



# Sexual Exploitation Investigation Unit

- Sexual exploitation
- Online Sexual Exploitation (“Grooming”)
- Indecent images of children





# Sexual Exploitation Investigation Unit

Two streams for investigation, but combine when there are investigations that require additional skills or resources.

## Child Sexual Exploitation Investigation

2 Detective Sergeant  
17 Detective Constables

## Paedophile Online Investigation Team

1 Detective Sergeant  
8 Detective Constables



One of the areas that sets Public Protection apart from other areas of Police Investigation is the holistic approach to the way that it approaches the enquiry, victim and suspect.

We work closely with Children's Social Care, Education and Health in the City and County as well as NSPCC and The Children's Society to ensure that our victim, suspects and wider public is appropriately protected, supported and serviced

Work with National agencies such as NCA and CEOP to share and maximise intelligence and evidence gathering



- Attend and provide intelligence and information to Child Sexual Exploitation meetings held by Children's Social Care across the City and County
- Share information with agencies through local agreements and MASH
- Deliver joint training with Social Care and Health through Child Sexual Exploitation Cross Authority Group
- Audit and review CSE investigations
- Look to use a combination of traditional and innovative investigative techniques...



- In the past 12 months Nottinghamshire Police have been granted through investigations 196 Sexual Harm Prevention Orders
- In the last month we have been granted the first Sexual risk Harm order in the region
- We have served 31 Child Abduction warning notices



- The Sexual Risk Order was granted last month, as the result of a criminal investigation the evidential threshold was not met but officers at the SEIU felt that the risk this individual posed was significant and his history of behaviour needed addressing
- Child Abduction Warning Notices are continually used to good effect, the direction and notification it gives to the suspect have been used to justify several charges of Child Abduction.
- Sexual Harm Prevention orders are now requested as a matter of course and are used to good effect as often as bail conditions



# Child Sexual Exploitation

“Child sexual exploitation is a form of child sexual abuse. It occurs where an individual or group takes advantage of an imbalance of power to coerce, manipulate or deceive a child or young person under the age of 18 into sexual activity (a) in exchange for something the victim needs or wants, and/or (b) for the financial advantage or increased status of the perpetrator or facilitator. The victim may have been sexually exploited even if the sexual activity appears consensual. Child sexual exploitation does not always involve physical contact; it can also occur through the use of technology”.



# GROOMING



NOTTINGHAMSHIRE  
**POLICE**  
PROUD TO SERVE

*“I couldn’t wait to get back from school, switch on my computer and get chatting with him. I can’t believe he’d hurt other girls. I felt I could trust him with my life.”*

Teenage girl groomed on the internet



NOTTINGHAMSHIRE  
**POLICE**  
PROUD TO SERVE



# Grooming

Grooming happens when somebody seeks to build an emotional connection with a child for the purpose of abusing or sexually exploiting them. Many children and young people will not understand that they are/have been groomed or abused.

NSPCC



NOTTINGHAMSHIRE  
**POLICE**  
PROUD TO SERVE

# Grooming

- Pretending to be somebody they are not.
- Assuming a position of trust.
- Buying gifts.
- Paying attention.
- Trips/Outings.
- Gaining the trust of the family.
- Encouraging secrecy.
- Isolating the child.



# Grooming Online

- The forming of an online “friendship”
- Usually with the intention of arranging to meet a child or incite a child into sexual activity online.
- Use of flattery and promises of gifts or opportunity.
- Use of threats and intimidation.
- Perpetrators research potential victims prior to engagement.
- Perpetrator's presenting as children or young people.



## Online chatroom acronyms and codes

**ASL:** Age, Sex, Location

**BF/GF:** Boyfriend, Girlfriend

**BRB:** Be Right Back

**CD9:** Code 9 — means parents are around

**GNOC:** Get Naked On Cam (webcam)

**G2G:** Got To Go

**IDK:** I Don't Know

**LMIRL:** Let's Meet In Real Life

**LOL:** Laugh Out Loud

**MorF:** Male or Female

**MOS:** Mum Over Shoulder

**NIFOC :** Naked In Front Of Computer

**Noob:** When someone cannot use a computer very well

**NMU:** Not Much, You?

**P911:** Parents Emergency

**PAW:** Parents Are Watching

**PIR:** Parents In Room

**POS:** Parents Over Shoulder

**PRON:** Porn

**PRW:** Parents are Watching

**S2R:** Send to Receive (this relates to pictures)

**TDTM:** Talk Dirty To Me

**W/E:** Whatever

**Warez:** pirated software





June 2017

'LUKE CARLISE' 14 years old actually  
MARK TAFT- 27 years old  
Kirkby In Ashfield

Referred by NCA to Notts Police  
Images requested via Facebook

Victims across England and NI aged between 12  
-17 years

- Used neighbours Wifi
- Fetish for school shoes
- Children's underwear recovered from under bed
- Several Young girls thought he was there actual girlfriend



NOTTINGHAMSHIRE  
**POLICE**  
PROUD TO SERVE

## Mark TAFT aka Luke Carlise



16th June 16- NCC- pleaded G to 13  
charges inc  
Causing/ Inciting sexual exploitation of a  
child/  
Inciting a child to engage in sexual activity  
and  
Making IIOC. 3yr 3 mth . SOR for life





April 2017  
DANIEL MEAKIN aged 21 Years  
Mansfield

Snapchat – Mallman86

-Offered young girls £500 for nude images  
then threatened to post on SM if did not send more.

Requested to meet for 14 yr old for sex

4<sup>th</sup> April 2017 sentenced -meet child following  
sexual grooming/ IIOC/ incite sexual activity .

PWITS

Sentenced NCC - 4yrs 9 Months. SOR life





Leon Cornwall 20 years  
Stapleford Notts

Met two 14 year olds in Stapleford via Facebook.

Was charged with sexual activity with a child  
after having sexual intercourse with them  
knowing they were aged 14.

Was on court bail when had sex with second 14  
yr old child.

Both girls vulnerable and known to police and  
social care

6<sup>th</sup> February 2017 sentenced to 8 years for sexual  
activity with child x 2. SOR life



NOTTINGHAMSHIRE  
**POLICE**  
PROUD TO SERVE





2017

Jermaine Collishaw 27 years  
Sneinton

- Bus driver with NCT at time
- Drug dealer in local community.
- Took 2 vulnerable 14 yr old girls to hotel room in Nottingham in May 2016.
- Victim was reported missing from home at time
- Supplied alcohol
- Paid for room in false name and details
- Raped 14 yr old. Not reported for over a year when victim finally confided in family member.

12<sup>Th</sup> April 2017 sentenced NCC- 9 years + 18 months for PWITS drugs/ knuckle duster found in car on arrest. SOR life



NOTTINGHAMSHIRE  
**POLICE**  
PROUD TO SERVE

**In the summer of 2015 two 15 year old girls are reported missing from home by parents in Warsop Nottinghamshire.**

**Both girls are reported on several occasions and when return home are spoken by Police but no disclosures are made by the girls.**

**The girls are found on several occasions at the home address of 19 yr old Alysia Smedley. The girls are returned home but continue to abscond to this address and are regulary brought home by Police.**

**One of the girls parents believes her daughter is in a sexual relationship with Smedley but this is denied.**



**Due to a deteriorating relationship with her mother she would be allowed to stay at Smedley's house and told she was looking after her.**

**She would return home with love bites but when questioned deny it was Smedley and was told what to tell her parents and Police.**

**One evening she was reported missing and Police attended and found her hiding in the wardrobe In her bedroom after being told she was not present at the address.**



**A Cawn was issued and Smedley was arrested for child abduction. The 15yr old child continued to refuse to engage with Police and denied any inappropriate relationship with Smedley.**

**Police recovered a photo from Smedleys phone of them kissing and without the co-operation of the victim she was charged with sexual activity with a child and received a suspended sentence and SHPO stating she could have no unsupervised contact with U16.**



**Smeldey then befriended another 14 yr old child who lived in the same village.**

**She formed a sexual relationship with her unbeknown to her mother and engaged in penetrative sexual activity with her as a child.**

**Smedley continued to associate with young girls in breach of her SHPO but threatened the girls who feared her.**

**In 2017 the younger victim had the confidence to disclose to Police.**



**In support of this the first victim after Police had tried to build a rapport for 3 years the first victim finally provided evidence that she had been abused by Smedley for several years but didn't see anything wrong as she was a 'willing party'!**

**After hours of video recorded Police interviews and support by Imara the child revealed the full extent of the grooming by Smedley and the realisation she had been groomed and abused by a adult.**



**Smedley was charged with over 20 child sex offences relating to 3 different victims and remanded in to custody.**

**She denied everything throughout the hearings until the first day of trial in Sept 2018 when she pleaded guilty to 12 offences relating to all 3 victims.**

**On 27<sup>th</sup> September 18 at NCC she was sentenced to 3 years in prison. Given a 5 yr restraining order and SOR for life.**



**It took nearly 3 years but the OIC said the most satisfying element was the victims going from not co-operating with Police and support agencies at all to building trust and confidence to a point where she could disclose.**

**The victim commented that all she wanted was the community to know she was telling the truth which this conviction was the proof she needed.**





# STEREOTYPICAL IMAGE OF CHILD ABUSE PERPETRATOR??



Britain's 'youngest' female paedophile is jailed for three ...  
Alysia Smedley, of Warsop, Nottinghamshire

<https://www.dailymail.co.uk/news/article->

**Female paedophile caged after sex attacks on three girls in Warsop**

<https://www.dailystar.co.uk> › News › Latest News

Cached

27 Sep 2018 - JAILED: Alysia Smedley was caged for sex attack on three underage girls ... Smedley, formerly of Warsop, pleaded guilty ..

**Woman jailed for string of sex attacks on young girls | The Independent**

<https://www.independent.co.uk> › News › UK › Crime

Cached

27 Sep 2018 - Alysia Smedley admitted engaging in sexual activity with three girls, who ... Smedley, formerly of Warsop, Nottinghamshire, was jailed for three ...



NOTTINGHAMSHIRE  
**POLICE**  
PROUD TO SERVE

# Honour Based Abuse

PIO Hanna Berrada



NOTTINGHAMSHIRE  
**POLICE**  
PROUD TO SERVE

## HBA UNIT

# What we cover?

### Based at:

Honour Based Abuse  
Public Protection  
Oxclose Lane Police Station  
Oxclose Lane  
Nottingham  
NG5 6FZ

### Useful numbers:

Karma Nirvana  
0800 5 999 247

Foreign Office  
Forced Marriage Unit  
0207 008 0151

- Forced Marriage
- Female Genital Mutilation
- General Honour Based Abuse (domestic abuse with an element of perceived 'dishonour' or 'shame')



NOTTINGHAMSHIRE  
**POLICE**  
PROUD TO SERVE

# What can we do?

## FORCED MARRIAGE

- Obtain FMPO's from the court
- Safeguarding of victims – DNA, fingerprints, photograph
- Partnership working – MARAC, Women's Aid, Social Care
- Helping victims obtain recourse to public funds when immigration issues are present (spousal visas etc.)
- Helping victims into refuge
- Stopping travel out of the UK
- Taking statements/obtaining evidence to assist investigations

## FEMALE GENITAL MUTILATION

- Obtain FGMPO's from the court
- Safeguarding of potential victims, e.g. seizing passports
- Signposting of victims who have already had the procedure, for medical or emotional support
- Multi-Agency working with Children's Social Care to protect potential victims of FGM/working with families
- Stopping travel out of the UK
- Raising awareness of this issue, in the Force and also across Nottinghamshire



NOTTINGHAMSHIRE  
**POLICE**  
PROUD TO SERVE

# Mandatory Reporting

Mandatory Reporting Duty applies to any known cases of FGM in under 18's which are identified in the course of professional work. They **must** be reported to the Police. This duty came into force on 31<sup>st</sup> October 2015 under the FGM Act 2003.



NOTTINGHAMSHIRE  
**POLICE**  
PROUD TO SERVE

# The One Chance Rule

## Getting it right the first time

Often in HBA cases, the first meeting with a victim is the only opportunity professionals will have to engage with them; e.g. this has been due to fear, a change of mind re fleeing/reporting

- Professionals **MUST** ensure the one chance rule is applied and positive action is taken on first contact with a victim of honour based abuse
- Attempts should **NEVER** be made to mediate with family/friends/community



NOTTINGHAMSHIRE  
**POLICE**

PROUD TO SERVE

# Subtle Indicators

- Previous domestic abuse in 1/3 of all cases
- Previous convictions within the family
- Disharmonious home life
- Picked up and dropped off (chaperoned)
- Forced to wear headscarf, even at home
- Blocking social media
- Not allowed a phone



NOTTINGHAMSHIRE  
**POLICE**  
PROUD TO SERVE

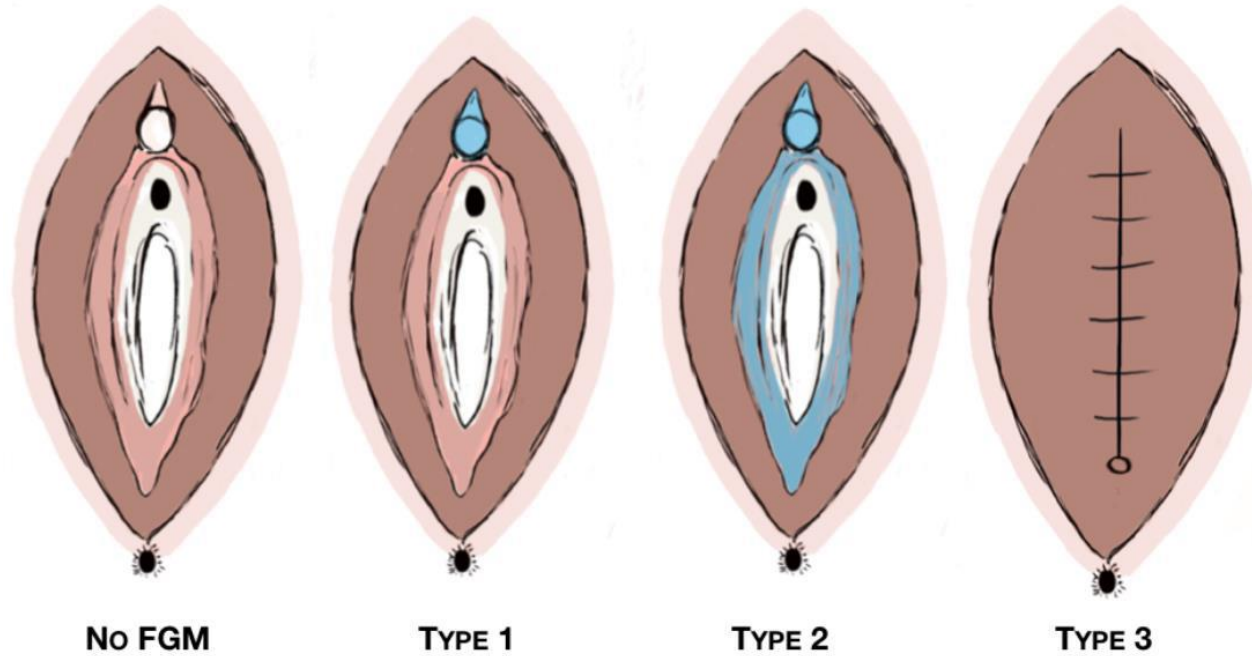
# Female Genital Mutilation



NOTTINGHAMSHIRE  
**POLICE**  
PROUD TO SERVE



# What is FGM?



Parts removed



Stiches



NOTTINGHAMSHIRE  
**POLICE**  
PROUD TO SERVE

## Prevalence

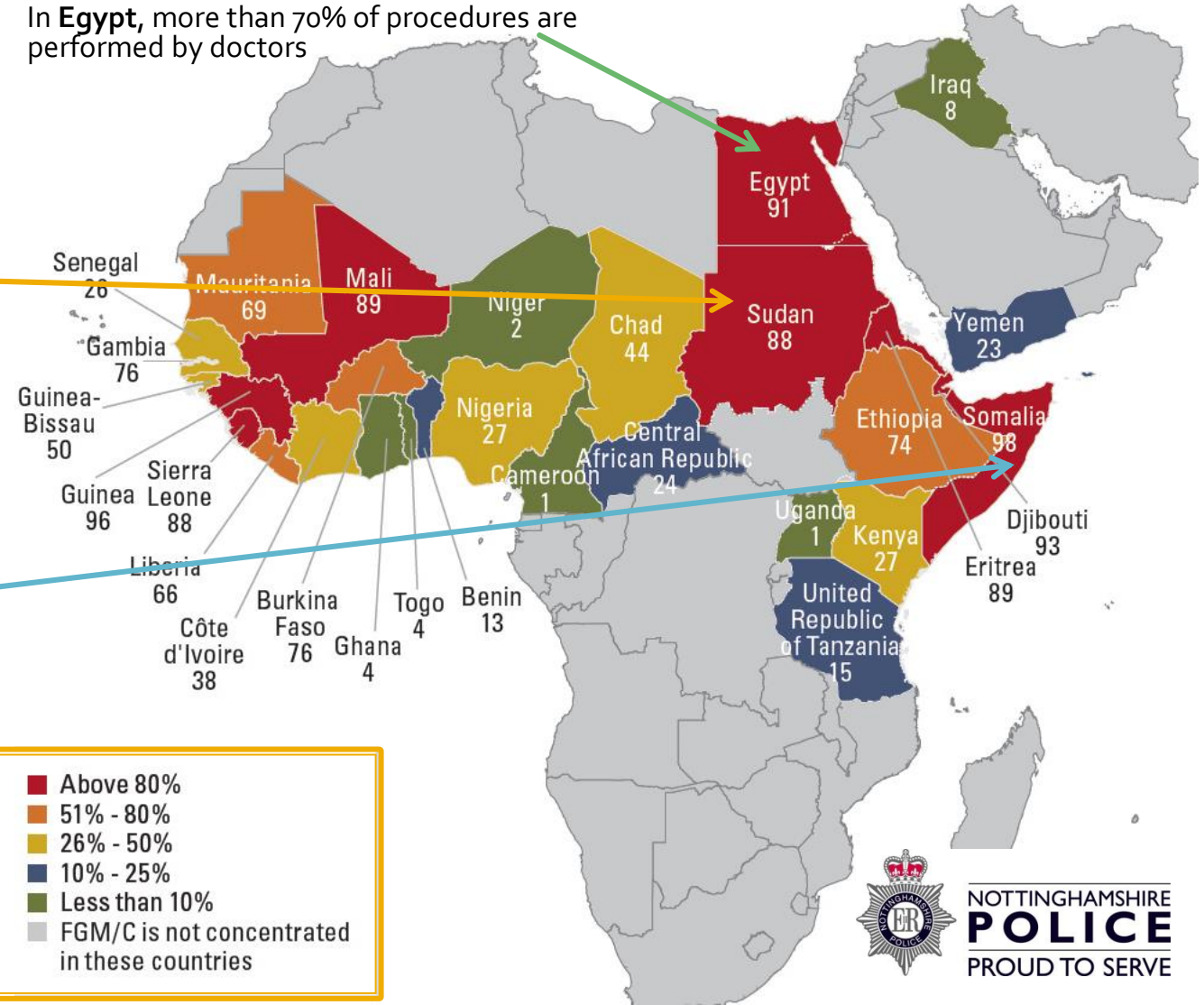
# FGM Problem Profile

"The Horn of Africa"

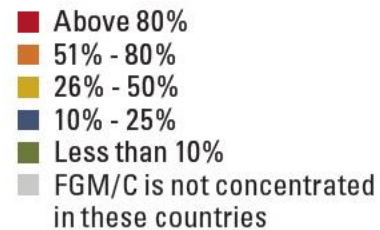
88% of females in **Sudan** have suffered FGM, hence it was not a surprise that our victim in the following case study had been subject to this

**Somalia** has the highest rate of FGM in the world at 98%

In **Egypt**, more than 70% of procedures are performed by doctors



Between 100 million and 140 million women and girls alive today have been subjected to female genital mutilation



NOTTINGHAMSHIRE  
**POLICE**  
PROUD TO SERVE

# FGM

## HEALTH CONSEQUENCES:

- constant pain
- pain and/or difficulty having sex
- repeated infections, which can lead to infertility
- bleeding, cysts and abscesses
- problems passing urine or incontinence
- depression, flashbacks and self-harm
- problems during labour and childbirth, which can be life-threatening for mother and baby
- death from blood loss or infection as a direct result of the procedure
- reduced sexual desire and lack of pleasure

## OPPORTUNITIES:

- midwifery
- cervical screening
- x-rays
- when on own – e.g. dentist
- mental health services
- in hospital after an incident



**Remember the One Chance Rule!!**



**Remember Mandatory Reporting!!**



# FGM Risk Factors

- Girl is between infancy-15yo
- The parents come from a community or ethnic group that practice FGM
- Come from a country of high prevalence
- Family live with extended family
- Parents indicate taking the child away for a prolonged period (often before school holiday)
- Frequent trips to country of origin
- Mother/older sibling has undergone FGM
- Family not fully integrated e.g. language barrier/ not accessing services



NOTTINGHAMSHIRE  
**POLICE**  
PROUD TO SERVE

# Pre and post indicators of FGM

## Risk Indicators:

- Talk of a “special procedure” or “ceremony”
- Talk of absence from school
- Long holidays planned

## Indicators FGM may have occurred:

- Prolonged absence from school
- Change in behaviour at school after holidays
- Difficulty sitting still, appears to be in pain or discomfort
- Spending a long time in the toilet  
(possible sign of UTI/menstrual issues)



NOTTINGHAMSHIRE  
**POLICE**  
PROUD TO SERVE

# Role of the Police

- Obtain FGMPO's from the court
- Safeguarding of potential victims, e.g. seizing passports
- Signposting of victims who have already had the procedure, for medical or emotional support
- Multi-Agency working with Children's Social Care to protect potential victims of FGM/working with families
- Stopping travel out of the UK
- Raising awareness of this issue, in the Force and also across Nottinghamshire



NOTTINGHAMSHIRE  
**POLICE**  
PROUD TO SERVE

# Forced Marriage



NOTTINGHAMSHIRE  
**POLICE**  
PROUD TO SERVE

# Why do forced marriages happen?

- Parents belief that religion or culture is being preserved
- Pressure from peers or family members
- Protecting “family honour” or “izzat”
- Preventing unwanted relationships outside the ethnicity, culture, religion or caste
- Belief that it will strengthen family links
- Financial gain (land, property or wealth remains within a family )
- Control unwanted behaviour or sexuality (e.g. promiscuity, gay/lesbian, alcohol/drug abuse, wearing make-up, westernised behaviour )
- Assisting claims for country residence(spousal visas)
- Obtaining a long term carer for the person with a learning disability
- Believing the marriage will somehow “cure” the disability



NOTTINGHAMSHIRE  
**POLICE**  
PROUD TO SERVE



# The Forced Marriage Unit

FMU gave advice or support in around **1,200 cases** related to possible/ forced marriage in 2017:

- **30%** of cases involved victims below 18 years of age
- **30%**, the largest proportion of cases, involved 18-25 year olds
- **1 in 5** callers were male victims
- **125** cases involved those with disabilities (12%)
- **21** cases (2%) involved victims who identified themselves as lesbian, gay, bisexual or transgender
- **60%** of calls are made by professionals
- **40%** are personal (victims/friends/family) etc.)



NOTTINGHAMSHIRE  
**POLICE**  
PROUD TO SERVE

# The Forced Marriage Unit

The FMU have produced free e-learning courses for professionals:

[www.forcedmarriagegetraining.co.uk](http://www.forcedmarriagegetraining.co.uk)

[www.fgmelearning.co.uk](http://www.fgmelearning.co.uk)



NOTTINGHAMSHIRE  
**POLICE**  
PROUD TO SERVE

# Role of the Police

Most of the Police involvement in a Forced Marriage case will be either before the victim has travelled overseas and once someone has returned.

- Seize documents
- Carry out police checks – visits and intelligence
- Check travel movements
- Obtain FMPO's from the court
- Safeguarding of victims – DNA, fingerprints, photograph
- Partnership working – MARAC, Women's Aid, Social Care
- Helping victims obtain recourse to public funds when immigration issues are present (spousal visas etc.)
- Helping victims into refuge
- Stopping travel out of the UK
- Taking statements
- Obtaining evidence to assist investigations



NOTTINGHAMSHIRE  
**POLICE**  
PROUD TO SERVE

# Role of the Local Authority

Social services for both children and vulnerable adults play a **key role in both domestic and consular cases.**

**Capacity assessments**

**Finding Safe accommodation**

**Getting FMPO/FGMPO**

**Monitoring**

**Supporting other family members**



NOTTINGHAMSHIRE  
**POLICE**  
PROUD TO SERVE

# Freedom Charity App

For both potential victims and those concerned for others.

## Some of the features:

- GPS Tracking
- Advice for professionals –spotting the signs
- Advice and checklist for friends and friends of victims
- Links to nearest police station and hospitals
- Information also on sexual abuse and FGM
- Direct dial to Police, NSPCC, Freedom charity and the FMU helpline at the Foreign Office.
- Does not look like Forced Marriage App
- Free to download on iPhone and Android

[http://www.youtube.com/watch?v=\\_RWfbmGq4eo](http://www.youtube.com/watch?v=_RWfbmGq4eo)



NOTTINGHAMSHIRE  
**POLICE**  
PROUD TO SERVE

# Hestia.org/BrightSky

## Bright Sky



Download the **Bright Sky** app to:

- Record evidence in your Private Journal
- Find and contact your nearest support service
- Understand the signs of abuse
- Complete the 'Am I at Risk?' questionnaire



NOTTINGHAMSHIRE  
**POLICE**  
PROUD TO SERVE


# Karma Nirvana – 0800 5 999 247

**Forced marriage**  
is against UK Law and  
**is not part of any religion,**  
**culture or tradition**



CALL KARMA NIRVANA NOW  
**0800 5 999 247**  
WE NEVER TALK TO YOUR FAMILY


**WHEN IS  
A SPOON  
NOT JUST A SPOON?**



**WHEN IT SAVES A LIFE**  
**#EndForcedMarriage**

CALL KARMA NIRVANA NOW  
**0800 5 999 247**

Have you received  
**a report informing**  
about a **young woman**  
**being forced to**  
**marry a stranger?**



CALL KARMA NIRVANA NOW  
**0800 5 999 247**  
WE NEVER TALK TO YOUR FAMILY



NOTTINGHAMSHIRE  
**POLICE**  
PROUD TO SERVE

# CASE STUDY



NOTTINGHAMSHIRE  
**POLICE**  
PROUD TO SERVE



# July 2018

- A member of the public flagged down uniformed officers in Nottingham City Centre at 1:30am
- A member of the public had concerns for a 22yo female sat in Old Market Square clutching her stomach
- The female did not speak English but stated she had come by train from another county
- Officers noticed she seemed to be in excruciating pain
- She was taken to the QMC



NOTTINGHAMSHIRE  
**POLICE**  
PROUD TO SERVE

# At Hospital

- The two male PC's dropped the woman off at A&E and left while she was being assessed, however remained concerned so revisited later with a female officer, and using an interpreter established that:
- Victim was in pain due to having sex with her husband. She claimed that it was consensual sex as "it is her duty to her husband", even though it was extremely painful for her and she had told him NO. Further disclosures of violence
- She explained that she had been subject to FGM at the age of 6yo in Sudan, hence the pain during intercourse
- Injuries/bruises photographed for evidential reasons



NOTTINGHAMSHIRE  
**POLICE**  
PROUD TO SERVE

# Circumstances

- Victim has been married to the suspect for 2 years, however had been in the UK for less than 2 months
- Victim was in the UK on a spousal visa
- Victim stated her husband had become angrier since she has known him, she wanted to separate from him and he found out - so the violence began
- Victim wanted to go back to Sudan, however said her husband wouldn't let her
- Victim sold her only possession, a necklace, in order to buy a train ticket to flee to Nottingham



NOTTINGHAMSHIRE  
**POLICE**  
PROUD TO SERVE

# Positive Action

- Senior officer approved victim staying in a hotel for 10 days until recourse application complete
- HBA officers referred victim to Adult Social Care
- Social care provided funds in the interim as victim had 22 pence to her name
- HBA officers took victim to have biometrics taken and apply for leave to remain/public funds
- Letter came through to the station 9 days later, confirming victim has been granted access to public funds, and leave to remain in the UK for 3 months
- Victim now eligible to move into women's refuge as she can apply for housing benefit
- HBA officers took victim to refuge



NOTTINGHAMSHIRE  
**POLICE**  
PROUD TO SERVE

# Positive Action

Following up:

- Investigation into crime against victim on-going
- Social care remain involved and longer term work is needed to educate victim around boundaries/consent
- She has a solicitor and is applying for further leave to remain in the UK, due to her family back in Sudan pressurising her to return to the marriage. Fears HBA/death if she returns to Sudan
- As well as her case being heard at MARAC here in Nottinghamshire, she was also heard in the area she moved to refuge in, ensuring she receives the best on-going support possible
- Medical care also accessed due to FGM has had

END of case study



effects  
NOTTINGHAMSHIRE  
**POLICE**  
PROUD TO SERVE

# Survivor's Stories

Forced Marriage:

<https://www.youtube.com/watch?v=RmDjddEJL1M&feature=youtu.be>

FGM:

<https://www.youtube.com/watch?v=UKT1MX-RnmU>



NOTTINGHAMSHIRE  
**POLICE**  
PROUD TO SERVE

# HBA Safeguarding Unit

- **PIO Hanna Berrada**

101 X 3104590

- **PIO Alexa Robertson**

101 X 3102308

[hba@nottinghamshire.pnn.police.uk](mailto:hba@nottinghamshire.pnn.police.uk)



NOTTINGHAMSHIRE  
**POLICE**  
PROUD TO SERVE

# MARF

Children and Families Direct is operational **Monday to Friday from 8:30 am to 4:50 pm**. Outside of these hours, the telephone number should be used for emergency safeguarding enquiries only. To find out more, visit the [Nottingham Children's Partnership](#) website.

To make either a safeguarding referral or a request for services to Nottingham City Council Children's Services please complete the Multi-Agency Request for Services Form (MARF). Please find a copy of the template below.

Once completed sending by secure email to [candfdirect@nottinghamcity.gov.uk](mailto:candfdirect@nottinghamcity.gov.uk)

- [Multi Agency Request for Service Form \(MARF\)](#)
- [Completed MARF safeguarding example](#)
- [Completed MARF request for service example](#)





# Dates of Meetings 2020-2021

Wednesday 14<sup>th</sup> October 2020

Wednesday 10<sup>th</sup> February 2021

Wednesday 26<sup>th</sup> May 2021

